

Ra
0.2
1.6
6.3
25

JIS

NAMUR

±0.1
±0.2
±0.3
±0.5
±0.8

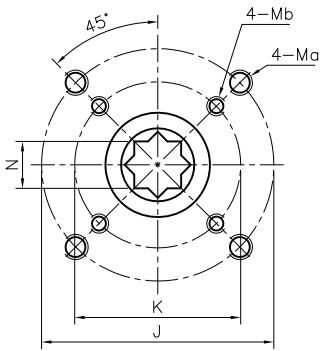
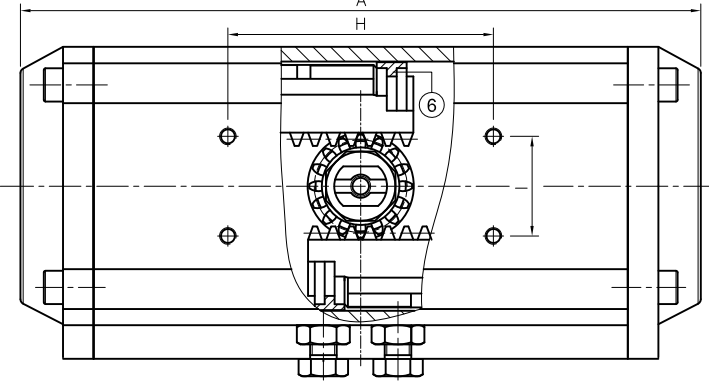
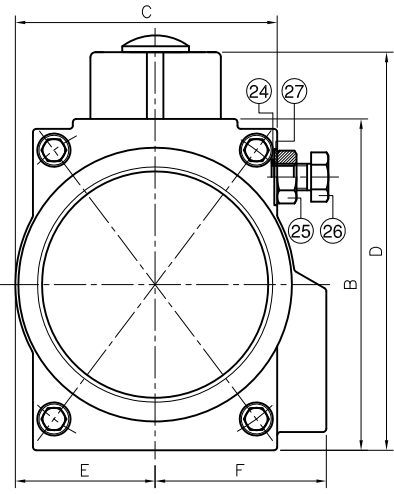
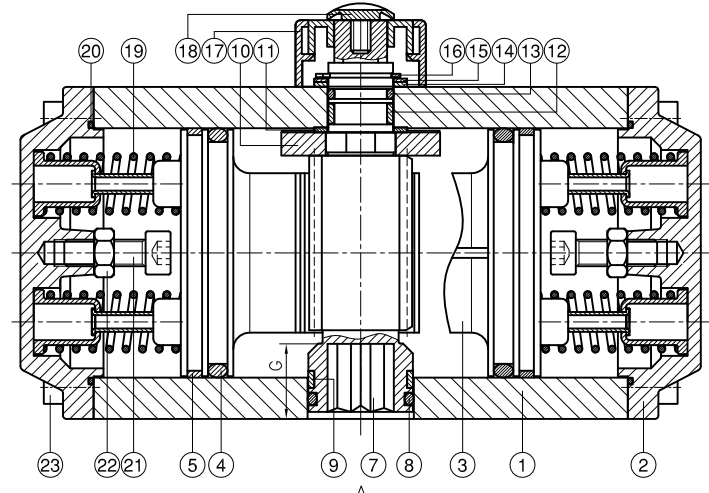
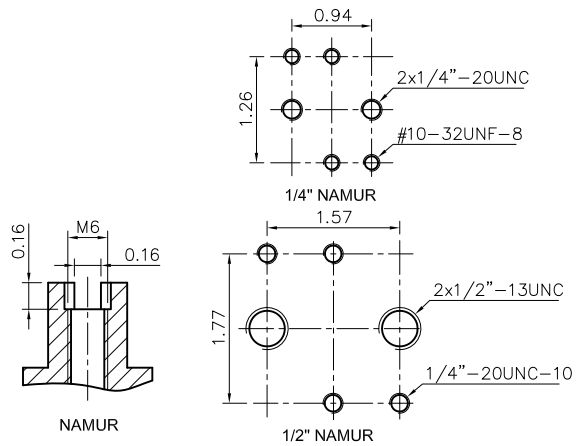
0.5~5
6~30
31~120
121~320
321~1000

GENERAL TOLERANCE

HAITIMA CORPORATION
P.O. BOX 34-36 TAIPEI
Tel: +886-2-26585800

E-mail: haitima@seed.net.tw
www.haitima.com.tw

TAIWAN R.O.C.
Fax: +886-2-26582266



| Model | A | B | C | D | E | F | G | H | I | N | J | K | Ma | Mb | Air Inlet |
|--------|-------|-------|-------|-------|------|------|------|------|------|------|-----|-----|--------|--------|------------|
| HT-032 | 4.33 | 1.77 | 1.77 | 2.56 | 0.89 | 0.89 | 0.47 | 1.97 | 0.98 | 0.35 | F03 | - | M5×7.5 | - | 1/8" |
| HT-052 | 6.2 | 2.91 | 2.36 | 3.7 | 1.18 | 1.61 | 0.55 | 3.15 | 1.18 | 0.43 | F05 | F03 | M6×10 | M5×8 | 1/8"or1/4" |
| HT-063 | 7.48 | 3.46 | 2.72 | 4.25 | 1.42 | 1.77 | 0.71 | 3.15 | 1.18 | 0.55 | F07 | F05 | M8×13 | M6×10 | 1/8"or1/4" |
| HT-075 | 8.09 | 3.94 | 3.11 | 4.72 | 1.65 | 2.05 | 0.79 | 3.15 | 1.18 | 0.55 | F07 | F05 | M8×13 | M6×10 | 1/8"or1/4" |
| HT-083 | 8.31 | 4.29 | 3.46 | 5.08 | 1.81 | 2.07 | 0.83 | 3.15 | 1.18 | 0.67 | F07 | F05 | M8×13 | M6×10 | 1/8"or1/4" |
| HT-092 | 10.2 | 4.72 | 3.85 | 5.51 | 2.01 | 2.26 | 0.87 | 3.15 | 1.18 | 0.67 | F07 | F05 | M8×13 | M6×10 | 1/8"or1/4" |
| HT-105 | 11.22 | 5.24 | 4.16 | 6.02 | 2.27 | 2.52 | 1.02 | 3.15 | 1.18 | 0.87 | F10 | F07 | M10×16 | M8×13 | 1/4" |
| HT-125 | 13.39 | 6.1 | 4.74 | 6.89 | 2.66 | 2.76 | 1.08 | 3.15 | 1.18 | 0.87 | F10 | F07 | M10×16 | M8×13 | 1/4" |
| HT-140 | 16.2 | 6.75 | 5.39 | 7.56 | 2.99 | 3.03 | 1.26 | 3.15 | 1.18 | 1.06 | F12 | F10 | M12×20 | M10×16 | 1/4" |
| HT-160 | 18.7 | 7.76 | 6.26 | 8.54 | 3.39 | 3.44 | 1.34 | 3.15 | 1.18 | 1.06 | F12 | F10 | M12×20 | M10×16 | 1/4" |
| HT-190 | 21.02 | 9.06 | 7.32 | 10.24 | 4.06 | 4.06 | 1.57 | 5.12 | 1.18 | 1.42 | F14 | - | M16×24 | - | 1/4" |
| HT-210 | 22.38 | 10.04 | 7.95 | 11.22 | 4.45 | 4.45 | 1.57 | 5.12 | 1.18 | 1.42 | F14 | - | M16×24 | - | 1/4" |
| HT-240 | 26.3 | 11.5 | 9.21 | 12.68 | 5.1 | 5.08 | 1.97 | 5.12 | 1.18 | 1.81 | F16 | - | M20×26 | - | 1/4"or3/8" |
| HT-270 | 29.31 | 12.6 | 10.41 | 13.78 | 5.77 | 5.79 | 1.97 | 5.12 | 1.18 | 1.81 | F16 | - | M20×26 | - | 1/4"or1/2" |

unit:in

- * Type HTS is the spring return.
- * Type HTD is the double acting.
- * Bottom drilling complies with ISO 5211/DIN3337 to match valve.
- * Shaft top end top drilling for assembling accessories are in accordance with VDI/VE-3845 NAMUR standard.
- * For type HTD without part 19.

| ITEM | PARTS | MATERIAL |
|------|---------------|-------------------------|
| 1 | BODY | EXTRUDED ALUMINUM ALLOY |
| 2 | CAP | DIE CAST ALUMINUM |
| 3 | PISTON | |
| 4 | O-RING | NBR |
| 5 | BEARING | POM |
| 6 | PISTON GUIDE | |
| 7 | PINION | ALLOY STEEL |
| 8 | O-RING | NBR |
| 9 | BEARING | POM |
| 10 | STROKE CAM | ALLOY STEEL |
| 11 | BEARING | POM |
| 12 | BEARING | |
| 13 | O-RING | NBR |
| 14 | BEARING | POM |
| 15 | THRUST WASHER | AISI 304 |
| 16 | SPRING CLIP | |
| 17 | INDICATOR | PVC |
| 18 | NUT | PLASTIC+STAINLESS STEEL |
| 19 | SPRING | SPRING STEEL |
| 20 | SEALS | NBR |
| 21 | BOLT | |
| 22 | NUT | AISI 304 |
| 23 | BOLT | |
| 24 | O-RING | NBR |
| 25 | NUT | AISI 304 |
| 26 | BOLT | |
| 27 | FLAT WASHER | |

Revision table with columns: Revise, Description, Date, Approve.

DRAWING NO. **HT001HD-10**

HAITIMA CORPORATION
Pneumatic Actuator

CHECK BY: _____ DRAWING BY: *Eric* DATE: **Apr.27.2010**

SPECIFICATION: **Pneumatic Actuator**

MATERIAL: **Aluminum**

PROCESS/Nr.: _____ UNIT / SCALE: **in**