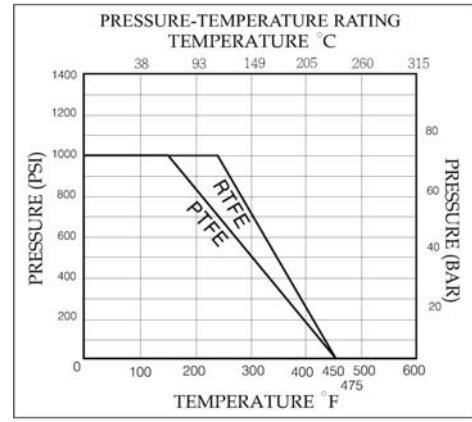
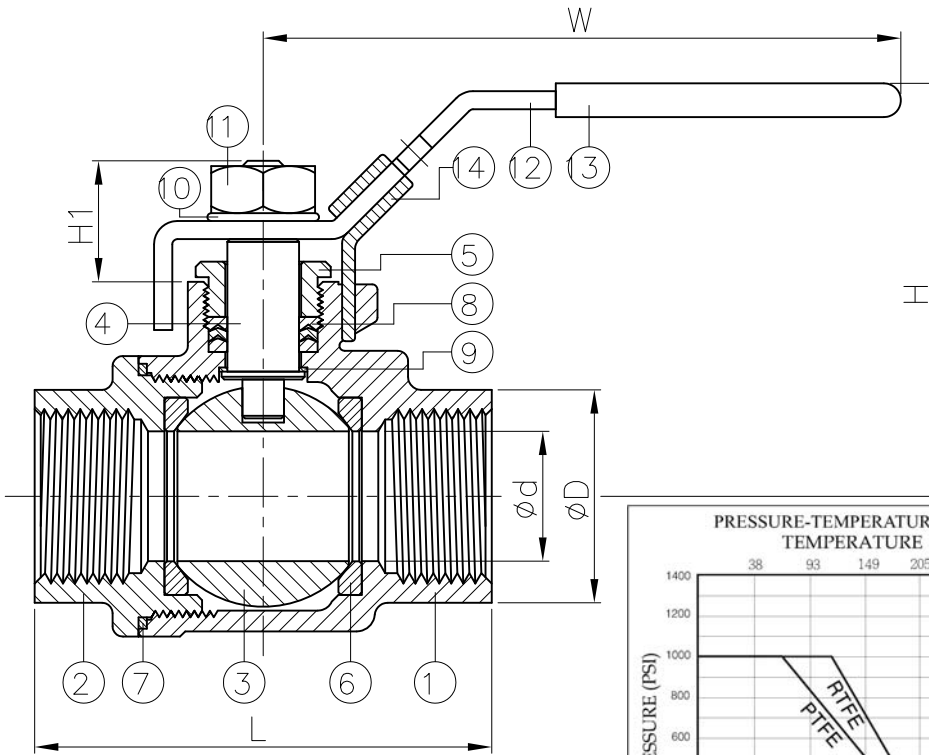
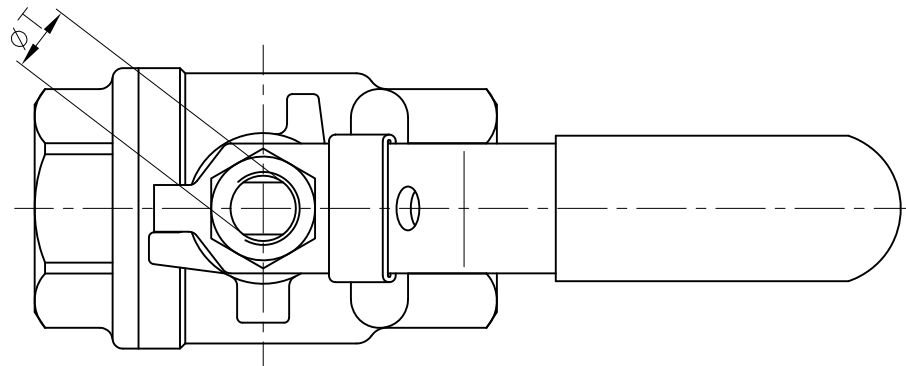


Ra	0.2	▽▽▽	JIS
▽	1.6	▽▽	
▽	6.3	▽	
▽	25	▽	
±0.1	0.5~5		
±0.2	6~30		
±0.3	31~120		
±0.5	121~320		
±0.8	321~1000		
GENERAL TOLERANCE			



DN	d	D	L	H	H1	T	W	Torque (N-m)	Weight (Kg)
8	11.6	19	50.8	58.5	18	3/8"-24UNF	100	3.5	0.24
10	12.5	22.5	50.8	58.5	18	3/8"-24UNF	100	4	0.24
15	15	26	58	58.5	18.5	3/8"-24UNF	100	5.5	0.3
20	20	32	65.6	63.5	22.5	7/16"-20UNF	125	7.5	0.47
25	25	38	78.7	78	25	7/16"-20UNF	149	11	0.76
32	32	48	90	83	26	7/16"-20UNF	149	15	1.13
40	38	54.8	105	102	30	1/2"-20UNF	190	20	1.75
50	50	67	124	108	30	1/2"-20UNF	190	40	2.69
65	63	85	146	138	40	3/4"-10UNF	250	60	5.62
80	76	100	164	146	40	3/4"-10UNF	250	85	7.5

unit:mm

NPS	d	D	L	H	H1	T	W	Torque (In-lb)	Weight (Lb)
1/4"	0.46	0.75	2	2.3	0.71	3/8"-24UNF	3.94	30.98	0.53
3/8"	0.49	0.89	2	2.3	0.71	3/8"-24UNF	3.94	35.4	0.53
1/2"	0.59	1.02	2.28	2.3	0.73	3/8"-24UNF	3.94	48.68	0.66
3/4"	0.79	1.26	2.58	2.5	0.89	7/16"-20UNF	4.92	66.38	1.04
1"	0.98	1.5	3.1	3.07	0.98	7/16"-20UNF	5.87	97.36	1.68
1-1/4"	1.26	1.89	3.54	3.27	1.02	7/16"-20UNF	5.87	132.76	2.49
1-1/2"	1.5	2.16	4.13	4.02	1.18	1/2"-20UNF	7.48	177.01	3.86
2"	1.97	2.64	4.88	4.25	1.18	1/2"-20UNF	7.48	354.03	5.93
2-1/2"	2.48	3.35	5.75	5.43	1.57	3/4"-10UNF	9.84	531.04	12.39
3"	2.99	3.94	6.46	5.75	1.57	3/4"-10UNF	9.84	752.31	16.53

unit:in

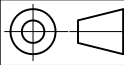
ITEM	PARTS	MATERIAL	
1	BODY	ASTM A351-CF8M	ASTM A216-WCB
2	CAP		
3	BALL	ASTM A351-CF8M	
4	STEM	ASTM A276-316	
5	GLAND	AISI 304	
6	BALL SEAT	PTFE / RTFE	
7	BODY SEAL		
8	PACKING	PTFE	
9	THRUST WASHER		
10	SPRING WASHER		
11	NUT	AISI 304	
12	HANDLE		
13	HANDLE SLEEVE	PVC	
14	LOCK DEVICE	AISI 304	

HAITIMA CORPORATION  
 P.O.BOX 34-36 TAIPEI  
 Tel:+886-2-26585800  
 E-mail:haitima@seed.net.tw  
 TAIWAN R.O.C. www.haitima.com.tw  
 Fax:+886-2-26582266



**HAITIMA CORPORATION**  
 Ball Valves

CHECK BY	DRAWING BY	DATE	SPECIFICATION	2-PC Screwed End Ball Valve 1000WOG
	<i>Dune</i>	Jan.26.2010	MATERIAL	ASTM A351-CF8M
			PROCESS/Nr.	
			UNIT / SCALE	mm



△			
△			
△			
Revise	Description	Date	Approve
DRAWING NO. <b>2006S003HD -10</b>			