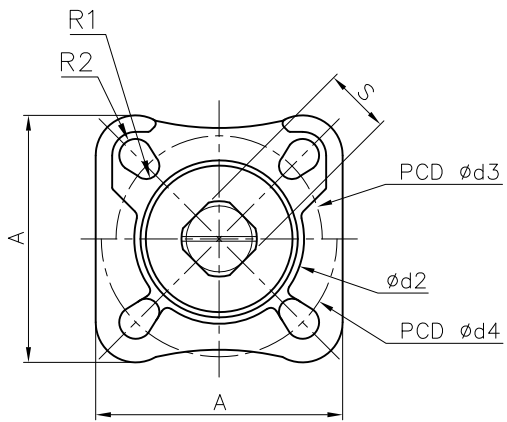


Ra	0.2	1.6	6.3	25
JIS	▽	▽	▽	▽
GENERAL TOLERANCE	±0.1	±0.2	±0.3	±0.5
	0.5~5	6~30	31~120	121~320
	321~1000			

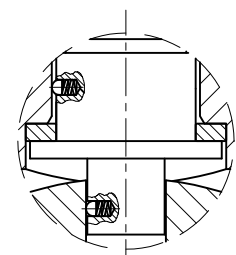
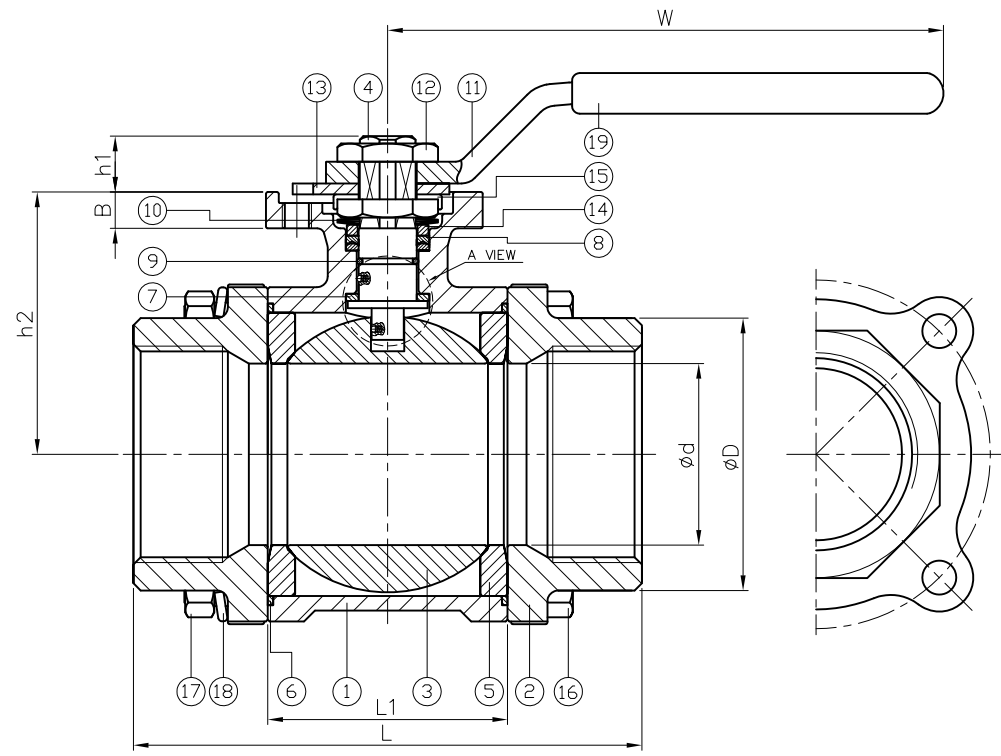


DN	d	D	L	L1	W	ISO 5211	A	B	S	h1	h2	d2	d3	d4	R1	R2	Torque (N-M)		Weight(kg)
																	Action	Breakaway	
8	8	21	55	23	120	F03/F04	42	6.5	9	8	40.3	31	36	42	2.75	2.75	2.5	3.6	0.6
10	10	21	60	23	120	F03/F04	42	6.5	9	8	40.3	31	36	42	2.75	2.75	2.5	3.6	0.6
15	15	28	75	23	120	F03/F04	42	6.5	9	8	40.3	31	36	42	2.75	2.75	2.5	3.6	0.6
20	20	35	80	28	120	F03/F04	42	6.5	9	9	45	31	36	42	2.75	2.75	4	6.11	0.8
25	25	42	90	35	148	F04/F05	50	7.5	11	10	47.5	35.5	42	50	2.75	3.5	4.3	9.9	1.1
32	32	52	110	44.8	148	F04/F05	50	7.5	11	11	55.5	35.5	42	50	2.75	3.5	11.7	15.6	1.7
40	38	59	120	54.5	178	F05/F07	70	9	14	12	65.3	56	50	70	3.5	4.5	14	22	2.9
50	50	72	140	66	178	F05/F07	70	9	14	12	73	56	50	70	3.5	4.5	19	26.8	3.9

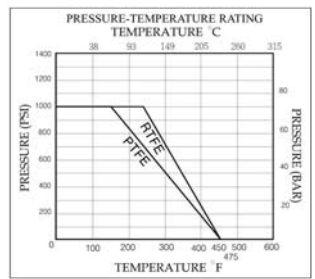
unit:mm

NPS	d	D	L	L1	W	ISO 5211	A	B	S	h1	h2	d2	d3	d4	R1	R2	Torque (in-lb)		Weight(lb)
																	Action	Breakaway	
1/4"	0.31	0.83	2.17	0.91	4.72	F03/F04	1.65	0.26	0.35	0.31	1.59	1.22	1.42	1.65	0.11	0.11	21.9	32.2	1.3
3/8"	0.39	0.83	2.36	0.91	4.72	F03/F04	1.65	0.26	0.35	0.31	1.59	1.22	1.42	1.65	0.11	0.11	21.9	32.2	1.3
1/2"	0.59	1.1	2.95	0.91	4.72	F03/F04	1.65	0.26	0.35	0.31	1.59	1.22	1.42	1.65	0.11	0.11	21.9	32.2	1.3
3/4"	0.79	1.38	3.15	1.1	4.72	F03/F04	1.65	0.26	0.35	0.35	1.77	1.22	1.42	1.65	0.11	0.11	35.4	54.1	1.8
1"	0.98	1.65	3.54	1.38	5.83	F04/F05	1.97	0.3	0.43	0.39	1.87	1.4	1.65	1.97	0.11	0.14	38	87.4	2.4
1-1/4"	1.26	2.05	4.33	1.76	5.83	F04/F05	1.97	0.3	0.43	0.43	2.19	1.4	1.65	1.97	0.11	0.14	103.6	138.1	3.7
1-1/2"	1.5	2.32	4.72	2.15	7.01	F05/F07	2.76	0.35	0.55	0.47	2.57	2.2	1.97	2.76	0.14	0.18	123.9	194.7	6.4
2"	1.97	2.83	5.51	2.6	7.01	F05/F07	2.76	0.35	0.55	0.47	2.87	2.2	1.97	2.76	0.14	0.18	168.2	237	8.6

unit:in



A VIEW - Anti-static device



ITEM	PARTS	MATERIAL			
		1	BODY	ASTM A351-CF8M	ASTM A216-WCB
2	CAP				
3	BALL	ASTM A351-CF8M			
4	STEM	ASTM A276-316			
5	BALL SEAT	RTFE			
6	GASKET	PTFE			
7	THRUST WASHER				
8	PACKING	PTFE			
9	O-RING	Viton			
10	DISC SPRING	SS 301			
11	HANDLE	ASTM A351-CF8			
12	STEM NUT	AISI 304			
13	STOPPER				
14	GLAND RING				
15	LOCK DEVICE				
16	BOLT				
17	NUT				
18	SPRING WASHER				
19	HANDLE SLEEVE			PVC	

HAITIMA CORPORATION  
 P.O.BOX 34-36 TAIPEI  
 Tel:886-2-26585800

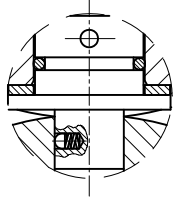
E-mail: haitima@ms8.hinet.net  
 TAIWAN R.O.C. www.haitima.com.tw  
 Fax:886-2-26582266



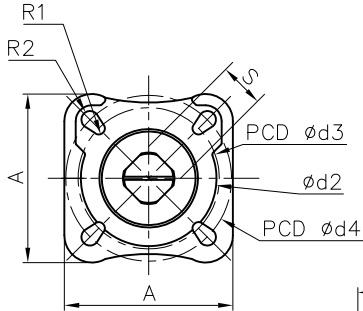
CHECK BY	DRAWING BY	DATE	SPECIFICATION	3-PC Screwed End Ball Valve 1000 WOG
	<i>Ray</i>	Jan.25.2013	MATERIAL	CF8M/WCB
			PROCESS/Nr.	
			UNIT / SCALE	mm

△			
△			
△			
Revise	Description	Date	Approve
DRAWING NO.		<b>2013D005HL - 13</b>	

Ra	0.2	1.6	6.3	25	0.1	0.5~5	GENERAL TOLERANCE
JIS	▽▽▽	▽▽	▽	▽	±0.1	6~30	
					±0.2	31~120	
					±0.3	121~320	
					±0.5	321~1000	
					±0.8		



A VIEW - Anti-static device



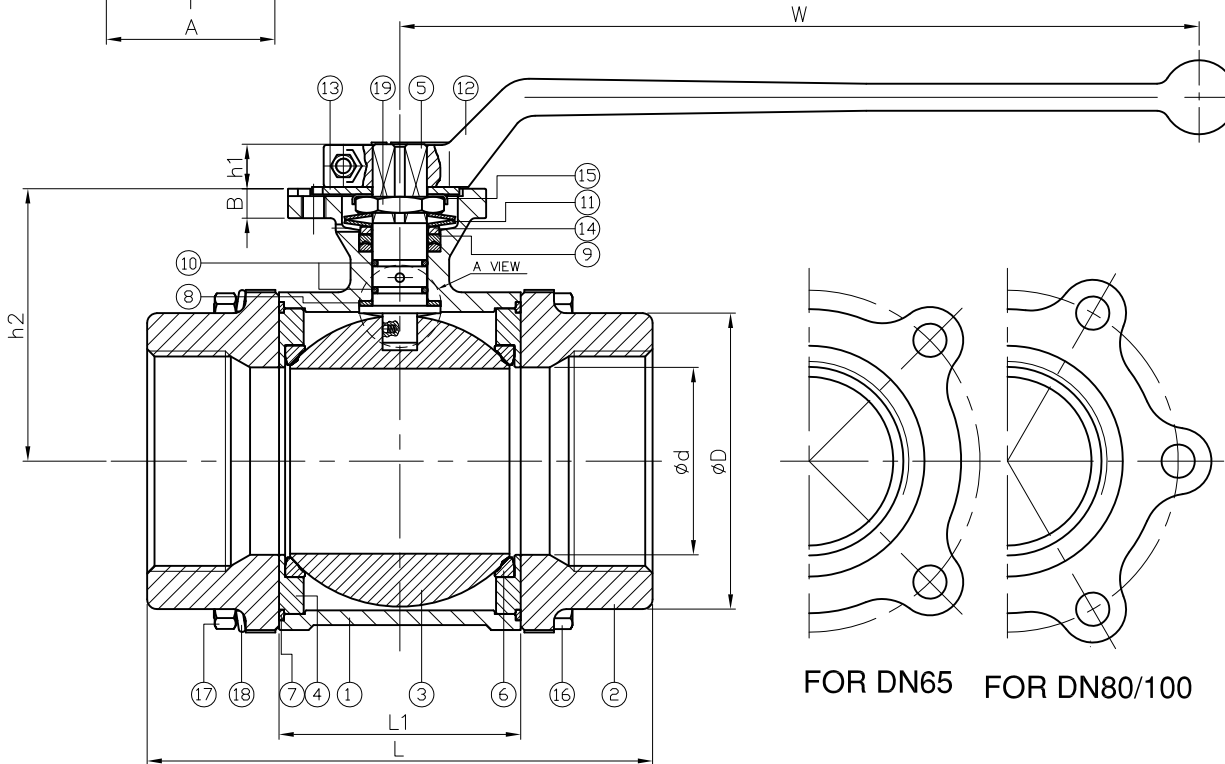
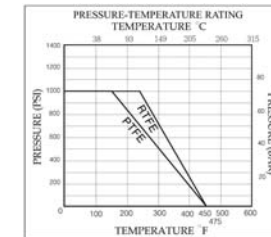
DN	d	D	L	L1	W	ISO 5211	A	B	S	h1	h2	d2	d3	d4	R1	R2	Torque (N-m)		Weight (kg)
																	Action	Breakaway	
65	65	92	185	88	325	F07/F10	100	10	17	17	105	70	70	102	4.5	5.5	30.6	89.2	9.8
80	76	104	205	98	325	F07/F10	100	10	17	17	111.5	70	70	102	4.5	5.5	65	97	12.9
100	100	140	240	120	325	F10/F12	125	12	22	22	136	100	102	125	5.5	6.5	70	116	23.6

unit:mm

NPS	d	D	L	L1	W	ISO 5211	A	B	S	h1	h2	d2	d3	d4	h	R	Torque (in-lb)		Weight (lb)
																	Action	Breakaway	
2-1/2"	2.56	3.62	7.28	3.46	12.8	F07/F10	3.94	0.39	0.67	0.67	4.13	2.76	2.76	4.02	0.18	0.22	270.4	789.3	21.6
3"	2.99	4.09	8.07	3.86	12.8	F07/F10	3.94	0.39	0.67	0.67	4.39	2.76	2.76	4.02	0.18	0.22	575.3	858.5	28.4
4"	3.94	5.51	9.45	4.72	12.8	F10/F12	4.92	0.47	0.87	0.87	5.35	3.94	4.02	4.92	0.22	0.26	619.5	1026.7	52

unit:in

ITEM	PARTS	MATERIAL	
1	BODY	ASTM A351-CF8M	ASTM A216-WCB
2	CAP		
3	BALL	ASTM A351-CF8M	
4	RETAINER		
5	STEM	ASTM A276-316	
6	BALL SEAT	RTFE	
7	GASKET		
8	THRUST WASHER	PTFE	
9	PACKING		
10	O-RING	Viton	
11	DISC SPRING	SS 301	
12	HANDLE	ASTM A351-CF8M	
13	STOPPER		
14	GLAND RING		
15	LOCK DEVICE		
16	BOLT	AISI 304	
17	NUT		
18	SPRING WASHER		
19	STEM NUT		



FOR DN65 FOR DN80/100

HAITIMA CORPORATION  
 P.O. BOX 34-36 TAIPEI  
 Tel: 886-2-26585800  
 E-mail: haitima@ms8.hinet.net  
 TAIWAN R.O.C. www.haitima.com.tw  
 Fax: 886-2-26582266



**HAITIMA CORPORATION**  
 Ball Valves

CHECK BY	DRAWING BY	DATE	SPECIFICATION	3-PC Screwed End Ball Valve 1000 WOG
	<i>Ray</i>	Jan.25.2013	MATERIAL	CF8M/WCB
			PROCESS/Nr.	
			UNIT / SCALE	mm

△			
△			
△			
Revise	Description	Date	Approve

DRAWING NO. **2013D006HL - 13**