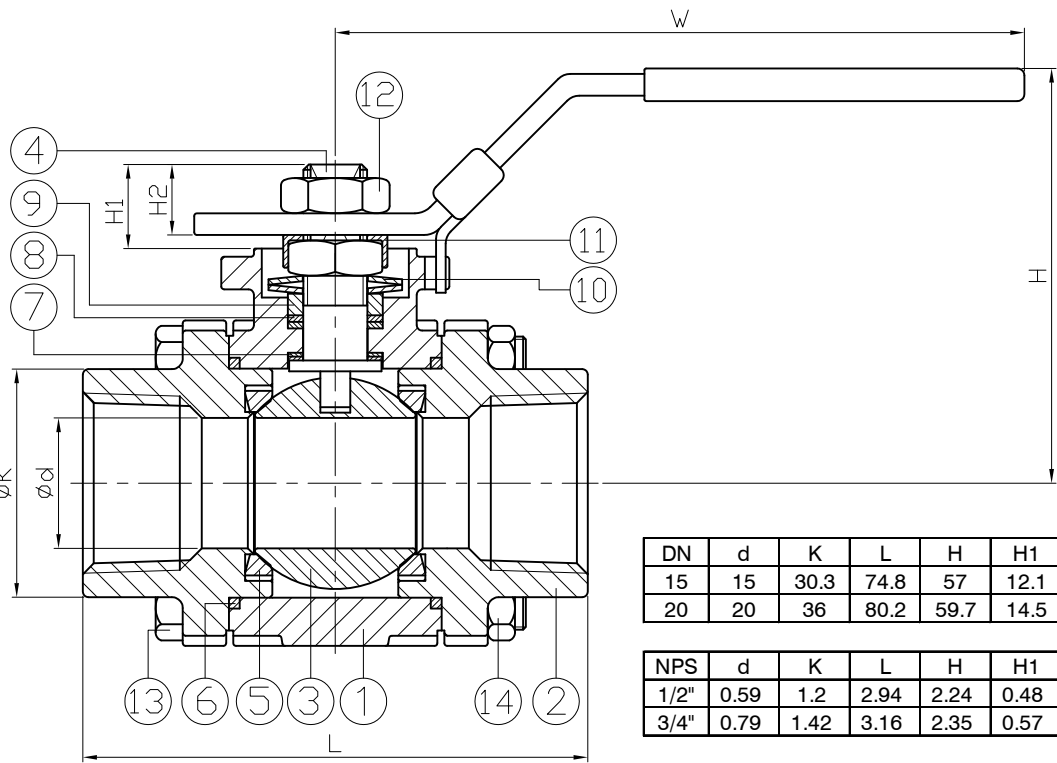
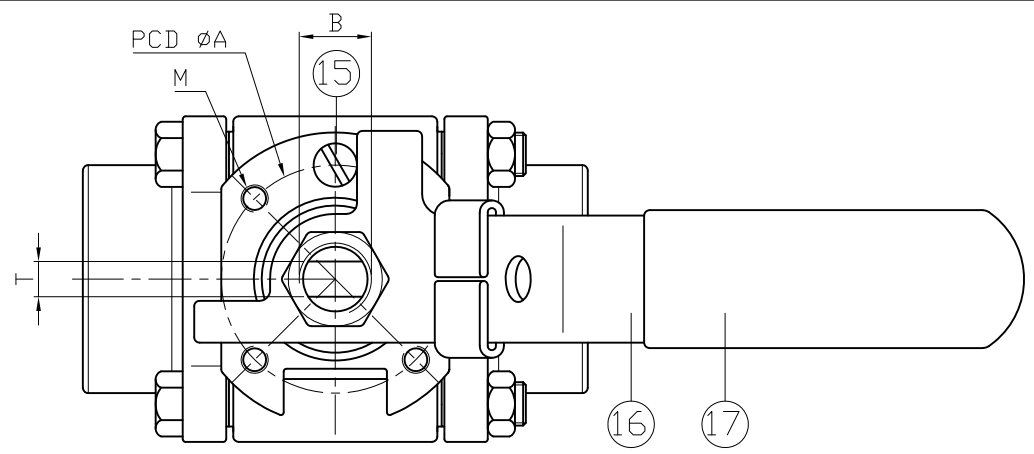


Ra
0.2
1.6
6.3
25
JIS

±0.1
±0.2
±0.3
±0.5
±0.8
GENERAL TOLERANCE

E-mail: haitima@seed.net.tw
www.haitima.com.tw
TAIWAN R.O.C.
P.O. BOX 34-36 TAIPEI
Tel: +886-2-26585800
Fax: +886-2-26582266

Fire Safe Certified to API 607 4th Edition



ITEM	PARTS	MATERIAL
1	BODY	ASTM A351-CF8M
2	CAP	ASTM A351-CF3M
3	BALL	ASTM A351-CF8M
4	STEM	ASTM A276-316
5	BALL SEAT	PEEK
6	GASKET	GRAPHITE
7	THRUST WASHER	CTFE
8	PACKING	GRAPHITE
9	GLAND RING	AISI 304
10	DISC SPRING	AISI 301
11	LOCK PAD	ASTM A167-304
12	STEM NUT	ASTM A194-8A
13	BOLT	ASTM A193-B8A
14	NUT	ASTM A194-8A
15	STOP PIN	AISI 304
16	HANDLE	ASTM A167-304
17	HANDLE SLEEVE	PVC

DN	d	K	L	H	H1	H2	W	T	A	ISO 5211	M	B	Weight (kg)	Torque (N-M)
15	15	30.3	74.8	57	12.1	9.8	113.5	5.7	36	F 03	M5*0.8	3/8"-24UNF	0.8	3.8
20	20	36	80.2	59.7	14.5	10.6	113.5	5.7	36	F 03	M5*0.8	3/8"-24UNF	0.9	5.1

unit:mm

NPS	d	K	L	H	H1	H2	W	T	A	ISO 5211	M	B	Weight (lb)	Torque (in-lb)
1/2"	0.59	1.2	2.94	2.24	0.48	0.39	4.5	0.22	1.42	F 03	M5*0.8	3/8"-24UNF	1.7	33.8
3/4"	0.79	1.42	3.16	2.35	0.57	0.42	4.5	0.22	1.42	F 03	M5*0.8	3/8"-24UNF	1.9	45.1

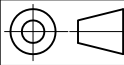
unit:in

△			
△			
△			
Revise	Description	Date	Approve

DRAWING NO. 2013KM086HL-13

HAITIMA CORPORATION
Ball Valves

CHECK BY	DRAWING BY	DATE	SPECIFICATION	3-PC Screwed End Ball Valve 2000 WOG
	Ray	Jan.22.2013	MATERIAL	CF8M
			PROCESS/Nr.	
			UNIT / SCALE	mm

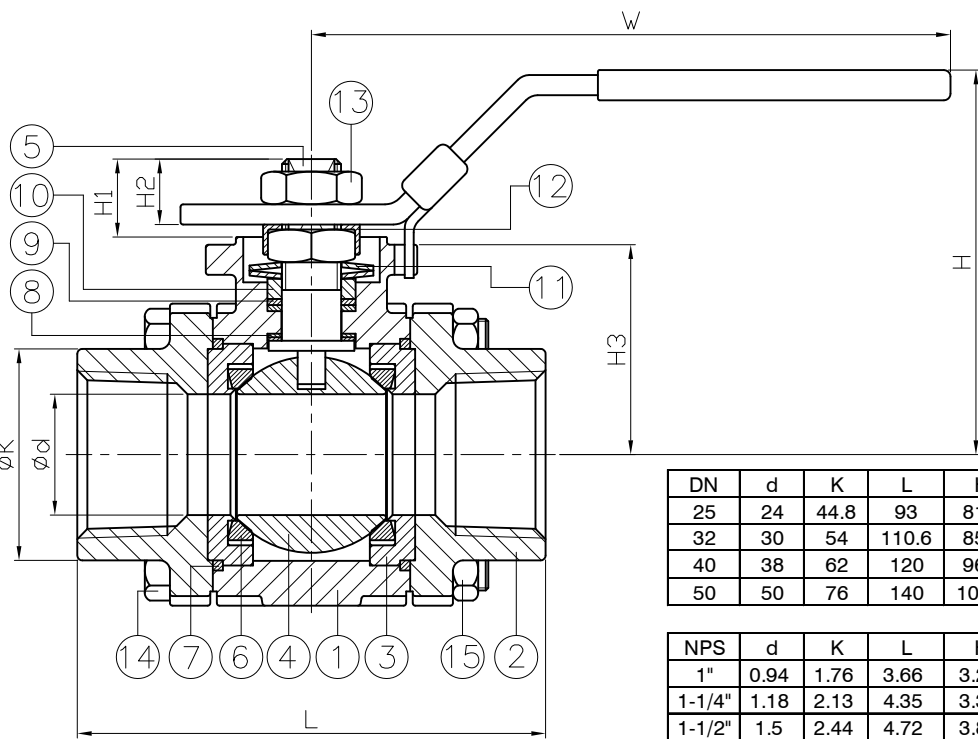
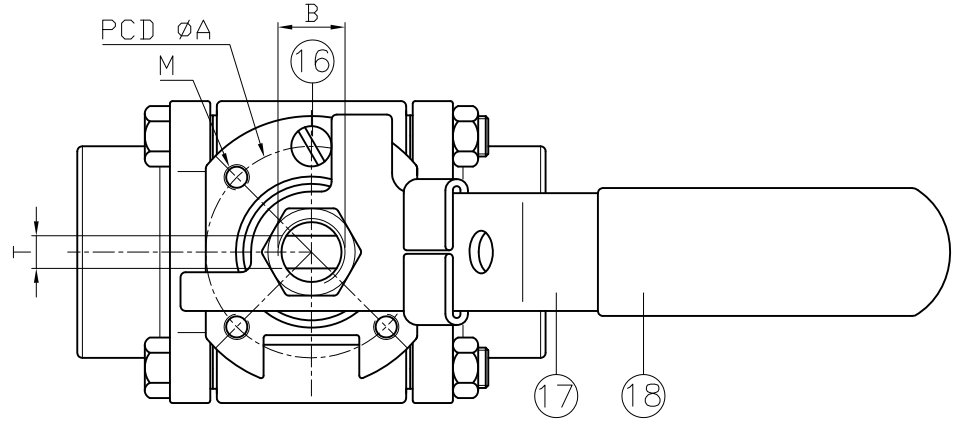


Ra	0.2	▽▽▽
	1.6	▽▽
	6.3	▽
	25	▽
JIS		

GENERAL TOLERANCE	±0.1	0.5~5
	±0.2	6~30
	±0.3	31~120
	±0.5	121~320
	±0.8	321~1000

E-mail: haitima@ms8.hinet.net
 TAIWAN R.O.C. www.haitima.com.tw
 Fax: 886-2-26582266

HAITIMA CORPORATION
 P.O. BOX 34-36 TAIPEI
 Tel: 886-2-26585800



Fire Safe Certified to API 607 4th Edition

ITEM	PARTS	MATERIAL
1	BODY	ASTM A351-CF8M
2	CAP	ASTM A351-CF3M
3	RETAINER	ASTM A351-CF8M
4	BALL	
5	STEM	ASTM A276-316
6	BALL SEAT	PEEK
7	GASKET	GRAPHITE
8	THRUST WASHER	CTFE
9	PACKING	GRAPHITE
10	GLAND RING	AISI 304
11	DISC SPRING	AISI 301
12	LOCK PAD	ASTM A167-304
13	STEM NUT	ASTM A194-8A
14	BOLT	ASTM A193-B8A
15	NUT	ASTM A194-8A
16	STOP PIN	AISI 304
17	HANDLE	ASTM A167-304
18	HANDLE SLEEVE	PVC

DN	d	K	L	H	H1	H2	H3	W	T	A	ISO 5211	M	B	Weight (kg)	Torque (N-M)
25	24	44.8	93	81.5	15.5	14	42.1	146	7.5	42	F04	M5*0.8	7/16"-24UNF	1.8	10.2
32	30	54	110.6	85.9	15.5	15	46.1	146	7.5	42	F04	M5*0.8	7/16"-20UNF	2.7	15.9
40	38	62	120	96.7	27.3	18.7	48.3	180	8.6	50	F05	M6*1.0	9/16"-18UNF	3.8	21
50	50	76	140	104.9	28.1	19	56.5	180	8.6	50	F05	M6*1.0	9/16"-18UNF	6.1	32.1

unit: mm

NPS	d	K	L	H	H1	H2	H3	W	T	A	ISO 5211	M	B	Weight (lb)	Torque (in-lb)
1"	0.94	1.76	3.66	3.21	0.61	0.55	1.66	5.75	0.3	1.65	F04	M5*0.8	7/16"-24UNF	3.9	90.2
1-1/4"	1.18	2.13	4.35	3.38	0.61	0.59	1.81	5.75	0.3	1.65	F04	M5*0.8	7/16"-20UNF	6	141
1-1/2"	1.5	2.44	4.72	3.81	1.07	0.74	1.9	7.09	0.34	1.97	F05	M6*1.0	9/16"-18UNF	8.4	186
2"	1.97	2.99	5.51	4.13	1.11	0.75	2.22	7.09	0.34	1.97	F05	M6*1.0	9/16"-18UNF	13.5	284.1

unit: in

1" : 2000WOG
 1-1/4"~2" : 1500 WOG

△			
△			
△			
Revise	Description	Date	Approve

DRAWING NO. **2013KM087HL-13**



HAITIMA CORPORATION
 Ball Valves

CHECK BY	DRAWING BY	DATE	SPECIFICATION	3-PC Screwed End Ball Valve
	Ray	Jan.22.2013	MATERIAL	CF8M
			PROCESS/Nr.	
			UNIT / SCALE	mm

