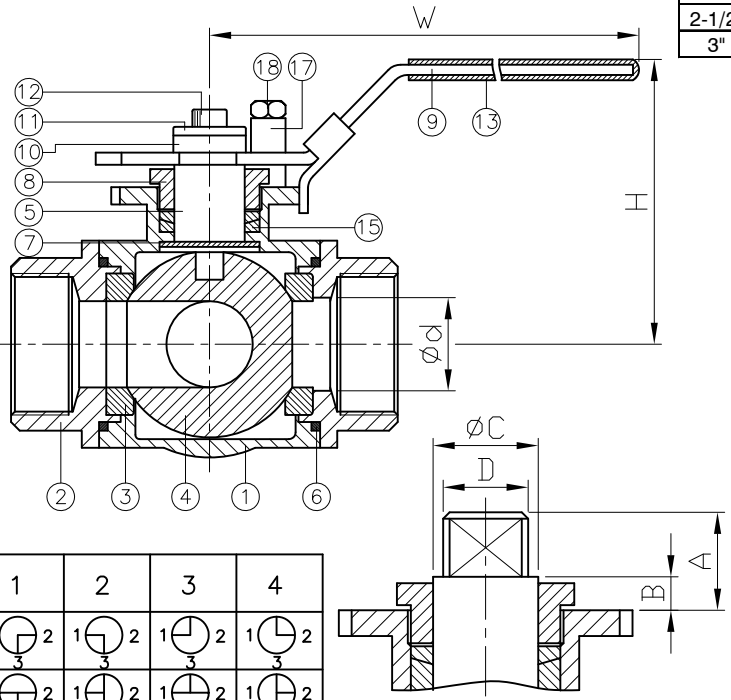
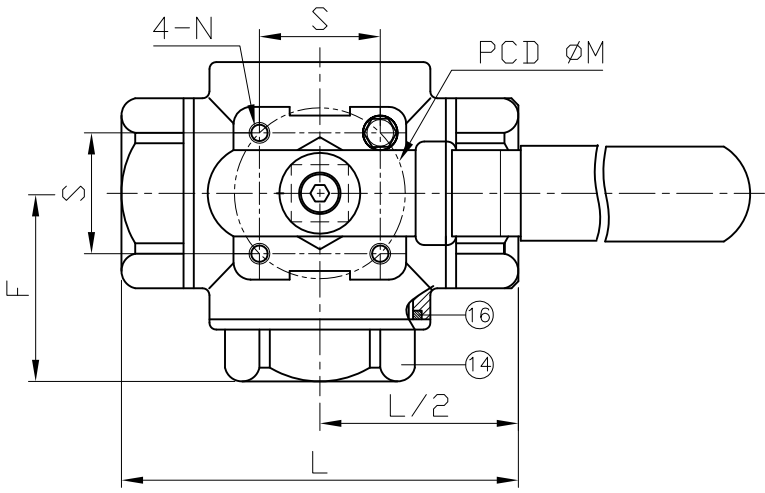


Ra
0.2
1.6
6.3
25
JIS

± 0.1
0.5~5
6~30
31~120
121~320
321~1000
± 0.2
± 0.3
± 0.5
± 0.8
GENERAL TOLERANCE

E-mail: haitima@seed.net.tw
www.haitima.com.tw
TAIWAN R.O.C.
P.O. BOX 34-36 TAIPEI
Tel: +886-2-26585800
Fax: +886-2-26582266

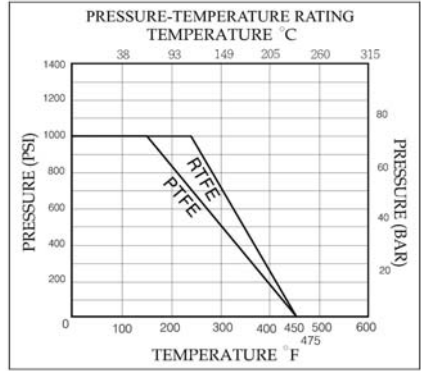


TYPE / PORT	1	2	3	4
L	1 3	1 3	1 3	1 3
T	1 3	1 3	1 3	1 3

DN	d	L	H	W	A	B	C	D	S	F	M	N	Torque (N-M)	Weight(kg)
8	11	69.4	59.7	133.4	10.7	5.7	12	9	29.7	34.6	42	M5*0.8	5.9	0.6
10	11	69.4	59.7	133.4	10.7	5.7	12	9	29.7	34.6	42	M5*0.8	5.9	0.6
15	12.5	75.7	63.1	133.4	10.7	5.8	12	9	29.7	37.25	42	M5*0.8	5.9	0.7
20	16	86.6	82.4	178.5	13.9	6.9	15	11	35.4	44.7	50	M6*1	9.1	1.2
25	20	102.4	86.1	178.5	20	8.5	15	11	35.4	51.4	50	M6*1	26	1.7
32	25	118.2	91.4	209.9	23.8	7.8	15	11	35.4	57.7	50	M6*1	39	2.5
40	32	125.8	102.7	208	25.8	10.2	15	11	49.5	62.7	70	M8*1.25	54.5	3.6
50	38	149	110.7	229.9	25.3	9.7	18.5	14	49.5	74.6	70	M8*1.25	84.5	5.7
65	50	160	115.8	229.9	24.5	8.5	18.5	14	49.5	80	70	M8*1.25	104	6.6
80	65	185	132	265	25.5	9	21	17	72.1	92.5	102	M10*1.5	155.9	10.5

unit:mm

NPS	d	L	H	W	A	B	C	D	S	F	M	N	Torque (in-lb)	Weight(lb)
1/4"	0.43	2.73	2.35	5.25	0.42	0.22	0.47	0.35	1.17	1.36	1.65	M5*0.8	51.8	1.3
3/8"	0.43	2.73	2.35	5.25	0.42	0.22	0.47	0.35	1.17	1.36	1.65	M5*0.8	51.8	1.3
1/2"	0.49	2.98	2.48	5.25	0.42	0.23	0.47	0.35	1.17	1.47	1.65	M5*0.8	51.8	1.5
3/4"	0.63	3.41	3.24	7.03	0.55	0.27	0.59	0.43	1.39	1.76	1.97	M6*1	80.5	2.6
1"	0.79	4.03	3.39	7.03	0.79	0.33	0.59	0.43	1.39	2.02	1.97	M6*1	230	3.7
1-1/4"	0.98	4.65	3.6	8.26	0.94	0.31	0.59	0.43	1.39	2.27	1.97	M6*1	345	5.5
1-1/2"	1.26	4.95	4.04	8.19	1.02	0.4	0.59	0.43	1.95	2.47	2.76	M8*1.25	482.5	7.9
2"	1.5	5.87	4.36	9.05	1	0.38	0.73	0.55	1.95	2.94	2.76	M8*1.25	747.6	12.6
2-1/2"	1.97	6.3	4.56	9.05	0.96	0.33	0.73	0.55	1.95	3.15	2.76	M8*1.25	920.1	14.6
3"	2.56	7.28	5.2	10.43	1	0.35	0.83	0.67	2.84	3.64	4.02	M10*1.5	1380.2	23.2



ITEM	PARTS	MATERIAL	
1	BODY	ASTM A351-CF8M	ASTM A216-WCB
2	CAP		
3	SEAT	PTFE / RTFE	
4	BALL	ASTM A351-CF8M	
5	STEM	SS 316	
6	END SEAL		
7	THRUST WASHER	PTFE	
8	GLAND		
9	HANDLE		
10	HANDLE WASHER	SS 304	
11	WASHER		
12	HANDLE NUT		
13	HANDLE SLEEVE	VINYL GRIP	
14	END CAP	ASTM A351-CF8M	ASTM A216-WCB
15	STEM PACKING	PTFE	
16	END SEAL		
17	STOP PIN		
18	BOLT	SS 304	

HAITIMA CORPORATION
Ball Valves

CHECK BY	DRAWING BY	DATE	SPECIFICATION	3 WAY Screwed End Ball Valve 1000 WOG
	Ray	Jan.24.2013	MATERIAL	CF8M/WCB
			PROCESS/Nr.	
			UNIT / SCALE	mm

△			
△			
△			
Revise	Description	Date	Approve
DRAWING NO. 2057N007PU -13			