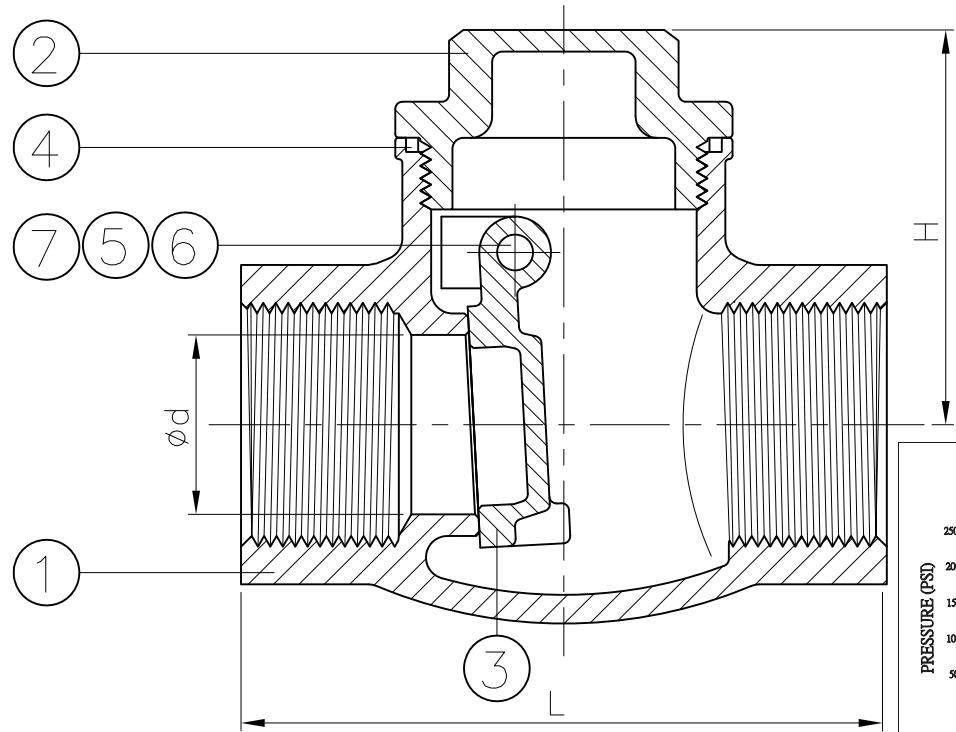
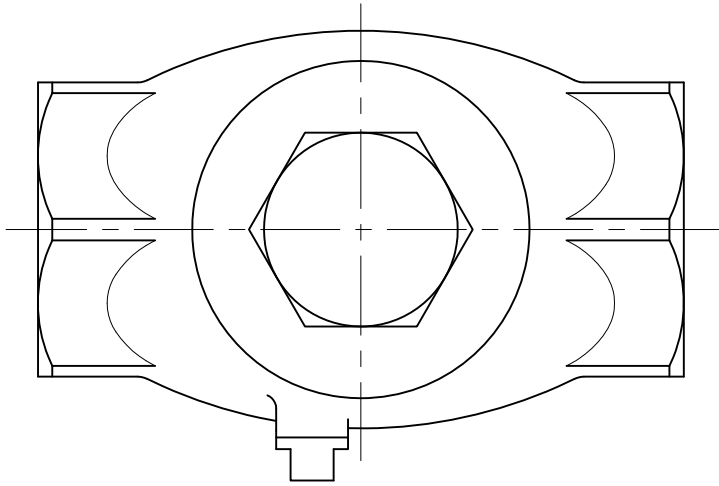


Ra	0.2	▽▽▽▽
	1.6	▽▽▽
	6.3	▽▽
	25	▽
	~	~

GENERAL TOLERANCE	±0.1	0.5~5
	±0.2	6~30
	±0.3	31~120
	±0.5	121~320
	±0.8	321~1000

HAITIMA CORPORATION
 P.O.BOX 34-36 TAIPEI
 Tel:+886-2-26585800
 E-mail:haitima@seed.net.tw
 www.haitima.com.tw
 TAIWAN R.O.C.
 Fax:+886-2-26582266

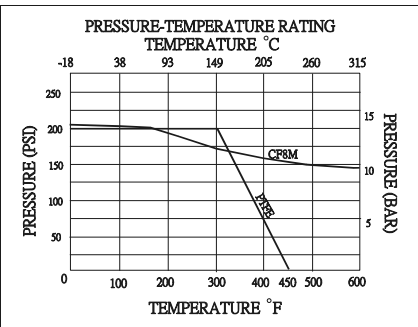


DN	d	L	H	Weight KG	Cv
15	15	66	46	0.3	30
20	20	81	54	0.48	37
25	25	91	60	0.75	54
32	32	106.5	72	1.15	103
40	40	121	75	1.54	143
50	50	142	82	2.54	360
65	65	159	90	3.8	440
80	80	190	104	5.9	520

unit:mm

NPS	d	L	H	Weight LB	Cv
1/2"	0.59	2.6	1.81	0.66	30
3/4"	0.79	3.19	2.13	1.06	37
1"	0.98	3.58	2.36	1.65	54
1-1/4"	1.26	4.19	2.83	2.54	103
1-1/2"	1.57	4.76	2.95	3.4	143
2"	1.97	5.59	3.23	5.6	360
2-1/2"	2.56	6.26	3.54	8.38	440
3"	3.15	7.48	4.09	13.01	520

unit:in



ITEM	PARTS	MATERIAL
1	BODY	ASTM A351-CF8M
2	CAP	
3	DISC	
4	GASKET	PTFE
5	PLUG SEAL	
6	PLUG	ASTM A276-316
7	PIN	

△			
△			
△			
Revise	Description	Date	Approve

DRAWING NO. **2030001XY -07**



CHECK BY	DRAWING BY	DATE	SPECIFICATION	SWING CHECK VALVES 200 WOG
	Dune	Feb.02.2007	MATERIAL	ASTM A351-CF8M
			PROCESS/Nr.	
			UNIT / SCALE	mm

