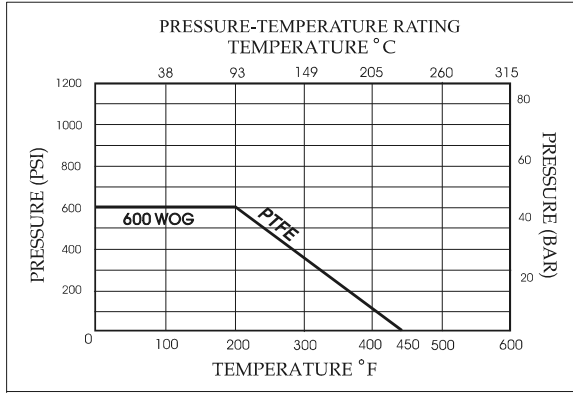
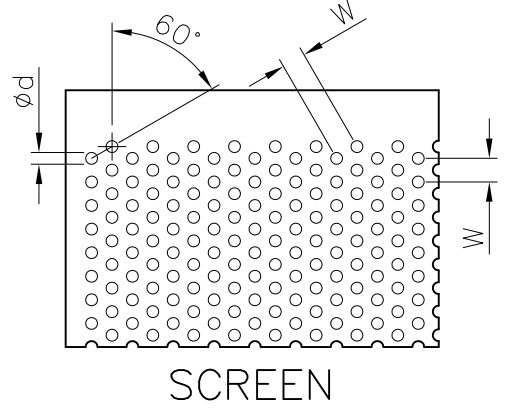
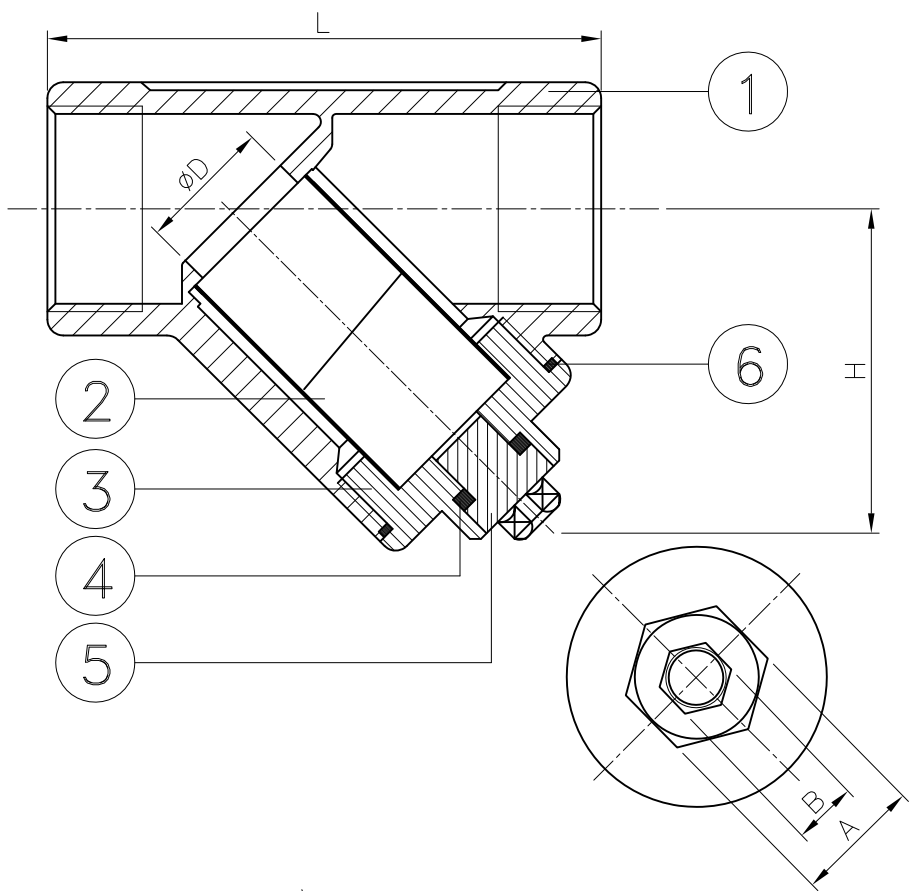


Ra	0.2	1.6	6.3	25	0.1	0.5~5
JIS	▽▽▽	▽▽	▽	▽	±0.1	6~30
					±0.2	31~120
					±0.3	121~320
					±0.5	321~1000
					±0.8	
GENERAL TOLERANCE						

HAITIMA CORPORATION
 P.O.BOX 34-36 TAIPEI
 Tel:886-2-26585800
 E-mail: haitima@ms8.hinet.net
 TAIWAN R.O.C. www.haitima.com.tw
 Fax:886-2-26582266



DN	L	H	D	W	d	A	B	Weight(kg)
8	57	35	10	2	0.6	16	8	0.2
10	57	35	10	2	0.6	16	8	0.2
15	62	38	15	2	0.6	16	8	0.2
20	71	42	20	2	0.6	16	8	0.3
25	87	50	25	2	0.6	20.7	10	0.5
32	99	55	32	2	1	25	12	0.6
40	111	59	38	2	1	25	12	0.9
50	137	73	51	2	1	32	12	1.4
65	172	91	65	2	1	38	15	3.3
80	206	110	80	2	1	38	15	5.3

unit:mm

NPS	L	H	D	W	d	A	B	Weight(lb)
1/4"	2.24	1.38	0.39	0.08	0.02	0.63	0.31	0.4
3/8"	2.24	1.38	0.39	0.08	0.02	0.63	0.31	0.4
1/2"	2.44	1.5	0.59	0.08	0.02	0.63	0.31	0.5
3/4"	2.8	1.65	0.79	0.08	0.02	0.63	0.31	0.6
1"	3.43	1.97	0.98	0.08	0.02	0.81	0.39	1
1-1/4"	3.9	2.17	1.26	0.08	0.04	0.98	0.47	1.4
1-1/2"	4.37	2.32	1.5	0.08	0.04	0.98	0.47	2
2"	5.39	2.87	2.01	0.08	0.04	1.26	0.47	3.2
2-1/2"	6.77	3.58	2.56	0.08	0.04	1.5	0.59	7.3
3"	8.11	4.33	3.15	0.08	0.04	1.5	0.59	11.7

unit:in

ITEM	PARTS	MATERIAL
1	BODY	SUS 316
2	SCREEN	
3	BONNET	
4	PACKING	CTFE
5	PLUG	SUS 316
6	GASKET	PTFE

△			
△			
△			
Revise	Description	Date	Approve

DRAWING NO. **2049001PU - 13**



CHECK BY	DRAWING BY	DATE	SPECIFICATION	Screwed End Y-Strainer 600 WOG
	Ray	Jan.24.2013	MATERIAL	SUS 316
			PROCESS/Nr.	
			UNIT / SCALE	mm

